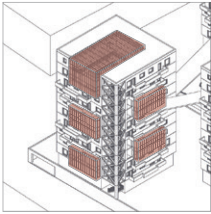


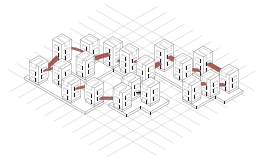
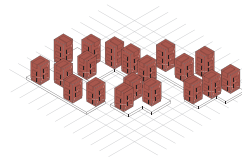
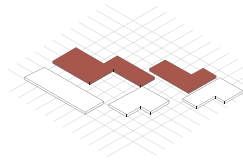
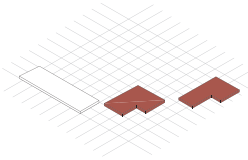
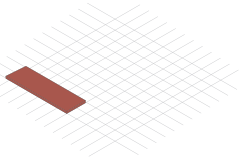
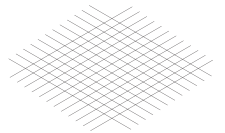
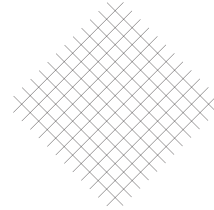
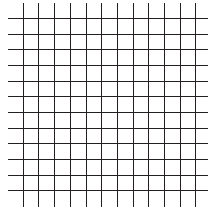


SITE PLAN 1:500



THE MASTER PLAN AND THE 45 DEGREE GRID

An important part of structuring the social sites and interactions are the terraces. These spaces are shared between small clusters of apartments, essentially creating miniature neighborhoods. These spaces appear on every second floor and face different ways intentionally. Because of this, a grid was made from the site of the buildings, then rotated 45 degrees to allow all the "terraces" to face as much south as possible.



Along the most trafficked road the ground floor contains retail and parking to support this function. Additional parking for residents is situated on the basement level.

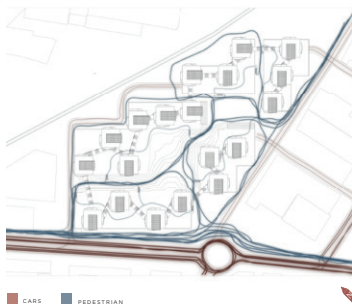
Along the less trafficked road flanking the site's south side, there are cafes and parking. These two structures follow the grid to a way that they create smaller pockets more fitting for outdoor seating. Also these buildings have parking for residents on the basement level.

The remaining ground level structures contain the rest of the resident parking. In addition they serve the function of closing off the shapes that are the "public park". Following the grid they they divide the space in the middle of the site into, the green park and the concrete park.

With the ground floor done, the buildings were placed on top along the grid, and adjusted so to not block too sunlight for other buildings.

To create a horizontal connection between the vertical structures sky bridges were added. Each building has rows of these connecting them to the adjacent structures. While these bridges serve as a connection and circulation between buildings, it's most important function is as a meeting place, intended to create relationships, also across buildings.

CIRCULATION



GREEN SPACE



BUSINESS

