



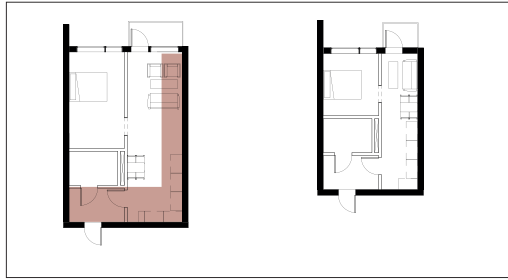
## RELOCATING SPACE FROM THE APARTMENT TO SHARED SPACES

To avoid simply adding space and functions to try and create community, adding more and the overall volume in the same time, space was relocated from the apartments. In Norway today, people often have an extra amount of space specifically for their cars or twice a day we go people use for a special occasion. This space would function as a lounge or shared space instead giving the residents the possibility for even bigger gatherings those rare times, while at the same time giving the residents something to connect.

A mix of LPD's proposed and examples of various projects being built in Oslo helped decide the size of the apartments and how much space would be relocated. For each one: 1 bedroom, 2 bedrooms and 3 bedrooms, the average size was found in projects being developed and this looked at how space could be removed from there. From that info various the small amounts contained in the project was made.

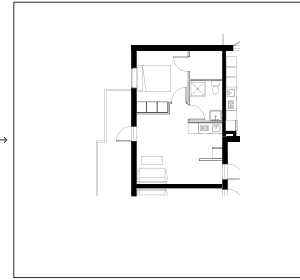
1 BEDROOM STUDY

SCALE 1:100



1 BEDROOM EXAMPLE FROM PROJECT

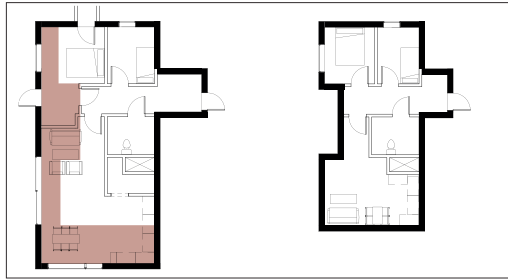
SCALE 1:100



These apartment types lose the most area as these small apartments are the likeliest to contain just one person, and therefore the biggest need to be outside the apartment is available. Despite the small size, one bedroom has been kept rather than making it a studio as completely private space might be even more important because of the social intentions of this project. The living room and kitchen is minimal so people the minimum, but to encourage use of the shared kitchen and other shared spaces.

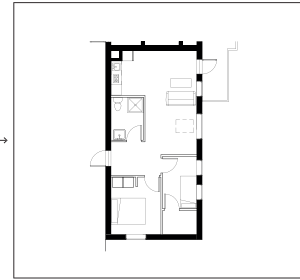
2 BEDROOM STUDY

SCALE 1:100



2 BEDROOM EXAMPLE FROM PROJECT

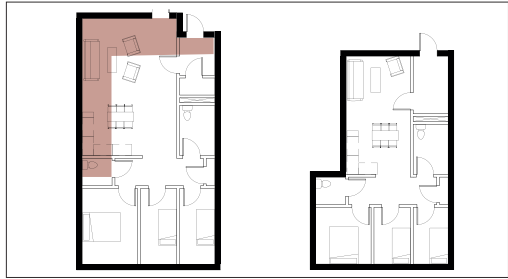
SCALE 1:100



The two bedroom apartments also lose a good percentage of their area, less than the one bedrooms, as these are more likely to be inhabited by multiple individuals. Since there is less chance someone will be home alone they most likely will get some social interaction within their apartment. Because of this the 2 bedroom apartments have a little more living room space and enough space for the residents to use together.

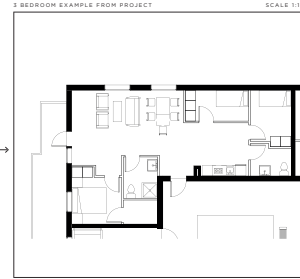
3 BEDROOM STUDY

SCALE 1:100



3 BEDROOM EXAMPLE FROM PROJECT

SCALE 1:100



The three bedroom apartments clearly lose the least percentage of area. As these probably will be a minimum of three individuals living in these apartments it means that they will have a network of social interactions existing inside the apartments. Because of this the living room is quite bigger and with an extension to the dining table, everyone can sit together. However, work family and friends over as well will get right on that also residents in these apartments is encouraged to use the common space.

