

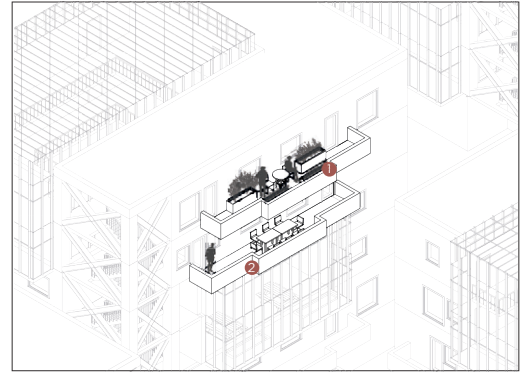
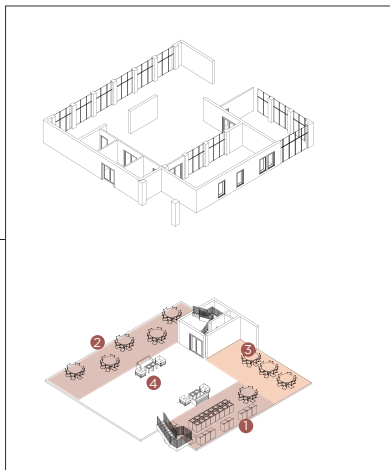
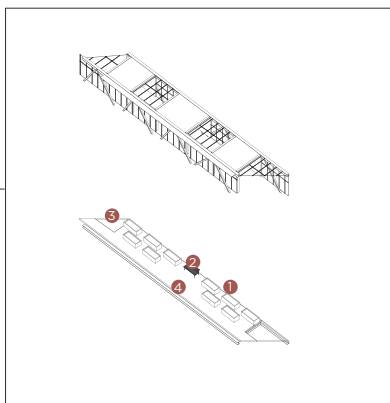
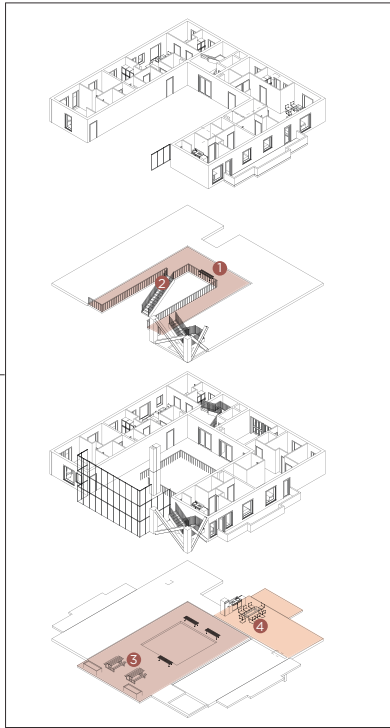
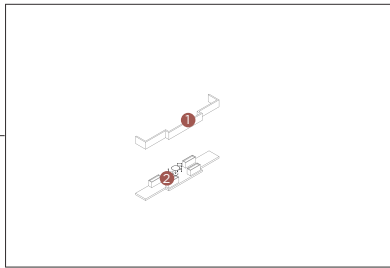
TINTED GLASS WITH LOWER OPACITY

GLASS WITH HIGH OPACITY

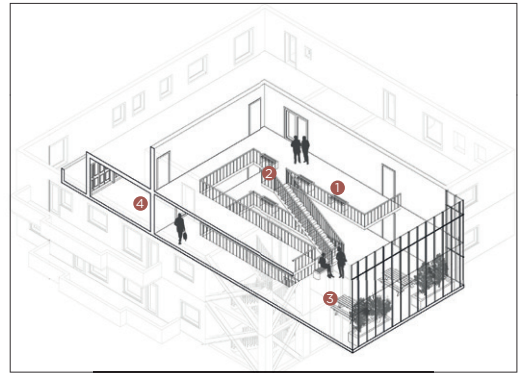
ROOFING FELT

EXPLODED STEEL FRAMEWORK

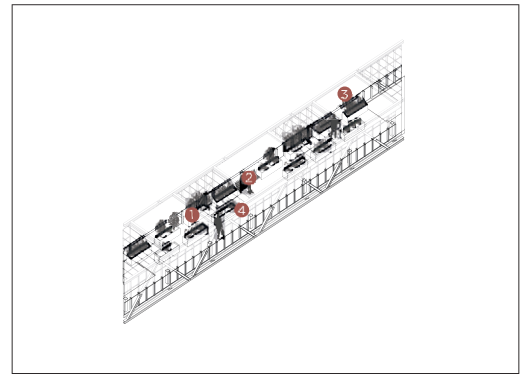
SLIGHTLY COLOURED CERAMIC



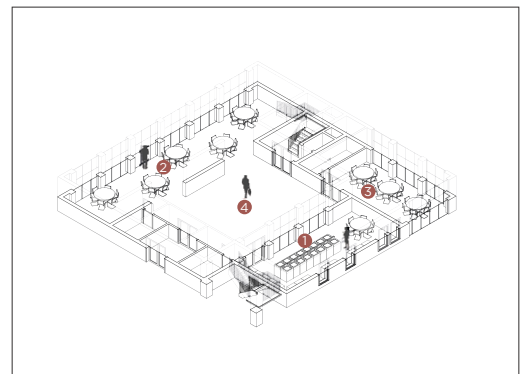
1. The middle of the balcony is a little wider to create little more space and a visual space as to where the "private" balcony ends and where the shared one begins.
2. The balcony is partly plan architecturally to allow the residents to permeate it.



1. The circulation space is a little bigger than normal and contains benches for casual conversation when coming, leaving or while waiting.
2. A stairwell in the middle of the terrace space act as a visual and physical connection between the people living on the second level and the shared space below.
3. The main feature of the open terrace space is a couple of picnic tables that can be moved and configured for the need at the time.
4. Attached to each terrace space is a room with a bigger kitchen and space to use a good amount of dinner guests.
5. "Light shaft", helping to guide some extra light down from above this space draws people towards the opening between these terrace spaces, allowing for a connection and interaction between these groups.



1. One of the bigger features on these bridges are planters intended for residents to be able to grow whatever they want in.
2. Seating for residents to enjoy the greenery and the view outside.
3. Each end of these bridges has glass in the floor as well as in the ceiling. This is foremost to avoid making dark corners under the bridges, but it also work as an additional interesting feature of the bridge. A place young and old can observe the daily heads far below.
4. There is an open path leading straight through the bridge for anyone that simply want to use it for circulation.



1. Localised here is the boundary rooms, rather open, for visual contact with other acquaintances that might be occupying the floor at the same time.
2. A lounge area dominated by chairs and tables and with windows to the park. A place eat lunch, have coffee with a friend or just to hang out.
3. A smaller room similar to the lounge area, except closed off, smaller and intended for work or homework.
4. A rather large open space with rooms for people to stand off to the side for a quick chat when running into people they know.