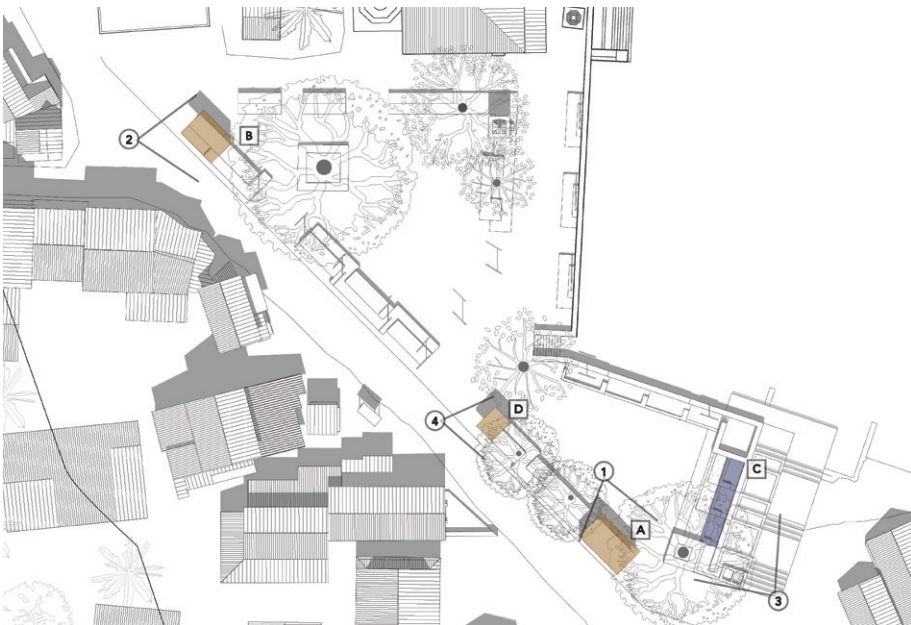
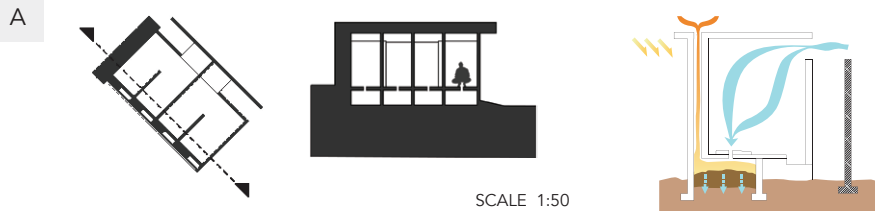




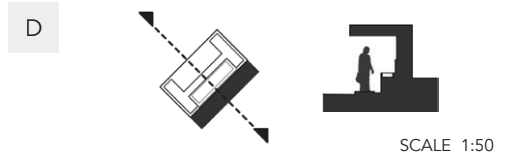
The proposed public washrooms is repositioned to allow more privacy for and space efficiency. The South-facing wall is used to integrate natural air ventilation system, removing undesirable odours while regulating temperatures.

To enhance **COMFORT** of the pedestrian environment, quality of public facilities are to be considered for daily necessities as well as social interactions.

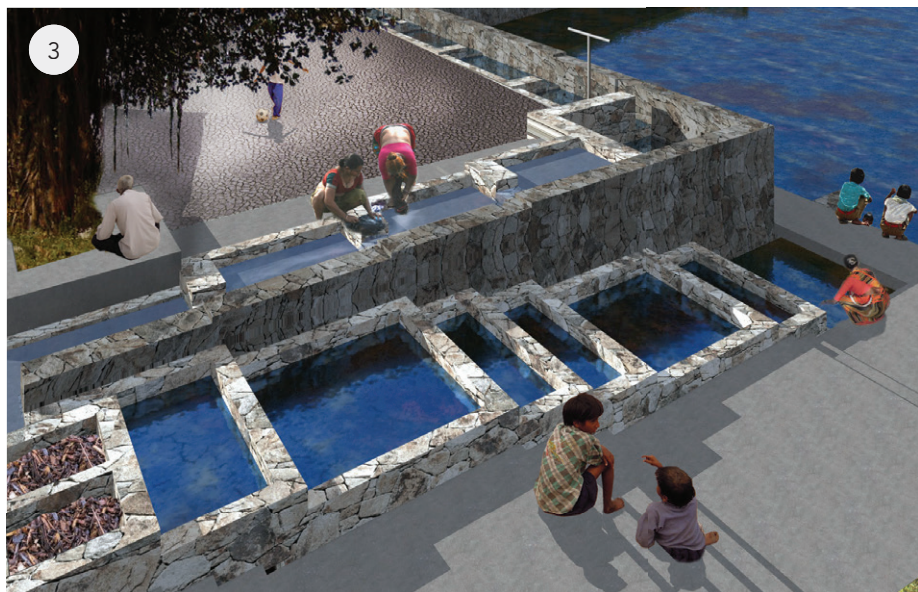
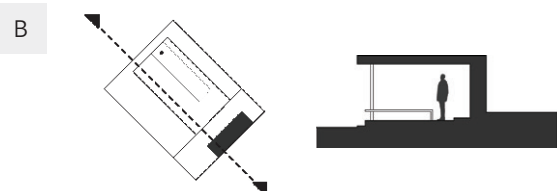
Utility designs such as public washrooms, bus stop, and water station are integrated with safety platforms along the Nageshwar square. By repositioning existing facilities and establishing new targeted zones, residents are more encouraged to integrate these public facilities into their existing daily lifestyle.



Water station is relocated towards the central entrance of square, providing easy access from all directions.



A semi-enclosed bus stop is integrated nearby the North entrance of square. The elevated platform provides a designated waiting areas for commuters away from vehicular traffic.



Separate washing basins are positioned alongside water filtration tanks, allowing residents to utilize water collected during monsoon season. This ensures cleanliness of temple tank, while providing easier surfaces for women's washing activities.